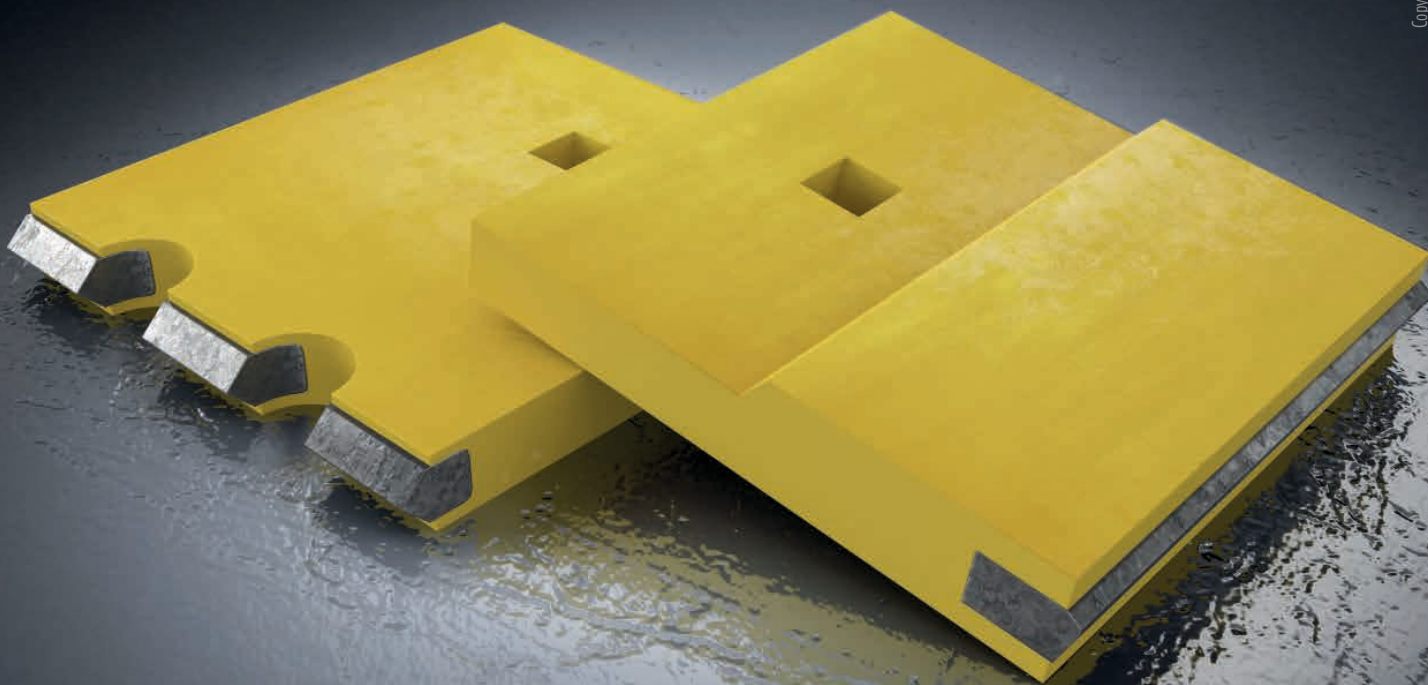


WEAR PRODUCTS



HARD METAL BLADES

Copyright © Arctic Machine Oy



APPLICATION

TOP DESIGN FOR ROAD
MAINTENANCE IN WINTER



EXCELLENT DURABILITY



COST SAVINGS



EXTREME DURABILITY

AM hard metal blades are designed for demanding use in which the blade's durability is the top priority. Hard metal is a composite material that contains wear-resistant tungsten with cobalt as a bonding agent. It boasts a superior service life in comparison to steel. Hard metal

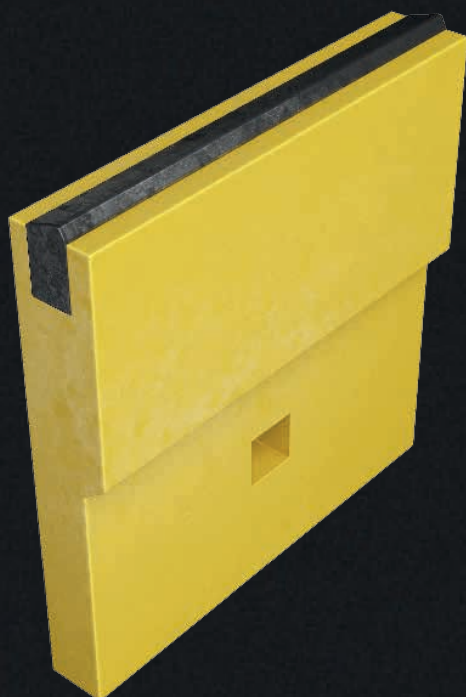
blades are suitable for demanding snow ploughing and other heavy-duty work, with serrated ones being ideal for ploughing and levelling of packed snow and for roughening surfaces. The AM hard metal blade selection can replace traditional flat, serrated, and perforated blades.



Manufacturer: Arctic Machine Oy
Location: Karsikonmäentie 1, 77800 Iisvesi, Finland
Call us at: +358 (0)20 7791 500
Send fax: +358 (0)20 7791 501
E-mail us: am@arcticmachine.com

Reseller

HARD METAL BLADES



AM FLAT HARD METAL BLADES

EXCELLENT DURABILITY FOR DEMANDING WORK

Arctic Machine flat hard metal blades are primarily used on front- and side-mounted ploughs to clear snow from main and side roads.

MEASUREMENTS OF FLAT HARD METAL BLADES

L = 610 mm

L = 792 mm

L = 912 mm

L = 1217 mm

AM SERRATED HARD METAL BLADES

AM SERRATED HARD METAL BLADES FOR DEMANDING PROFESSIONAL USE

AM serrated hard metal blades are used on centre-mounted scrapers, ploughs, snow loaders and levelling drags, for example. The blade is excellent for snow clearance on pedestrian routes and yard areas since, while clearing away the snow, the blade roughens the surface or reveals previously spread grit from under the packed snow.

MEASUREMENTS OF SERRATED HARD METAL BLADES

L = 792 mm

L = 912 mm, tooth spacing 14 mm

L = 1217 mm, tooth spacing 14 mm